

The ultimate fusion of performance and security



ECOSYS MA4000 Series



A4 Colour printers and MFPs

Up to 40 pages per minute

1200x1200 dpi resolution

7-inch full-colour touch panel

Low power consumption

Your complete modern-age office technology

Are you struggling to manage your devices across different workspaces? Is your printer taking too long to digitise documents? Are you worried about data leaks in your organisation?

Whether you work in finance, logistics or healthcare, printing and document management can quickly become a pain when your business is not equipped with the right technology. In response to increased demand for device functionality and security across various industries, Kyocera has innovated a **robust series of five colour printers and MFPs: the ECOSYS MA4000 Series.**

Designed for medium to large sized businesses, these devices provide **enhanced security features and high-powered scanning capabilities** to improve your organisation's work efficiency.



The full package



Solid data security

All your confidential information is safeguarded with the latest security features.



Compact design

Our small and slim devices can be easily installed in any work environment.



User-friendly technology

Kyocera's new user interface provides intuitive and easy navigation.



Remote panel support

Manage your fleet with ease and support your customers remotely.



Digitise documents

Enhanced scanning functions and rapid scan speeds optimise workflows.



Smarter working

Connect your device to cloud environments or your mobile to increase flexibility.



Eco-friendly innovation

Print using Kyocera's latest ecological toner on energy-efficient devices.



Simple setup and maintenance

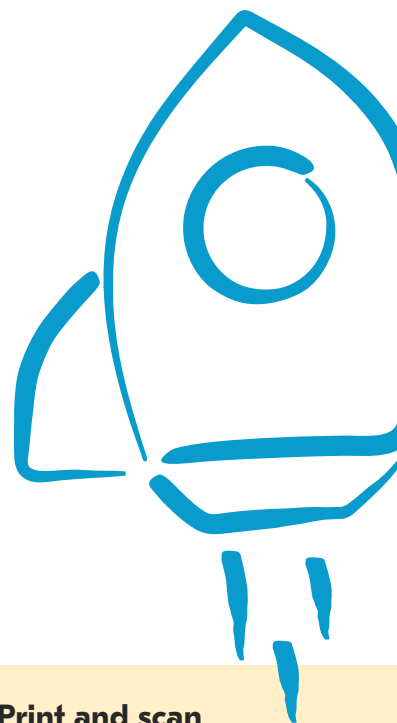
Get your device up and running in fewer steps and replace parts easily.



Productivity workhorse

Your business does not have to choose between cost-efficiency and productivity; with Kyocera, you can have both. Our range of colour printers and MFPs have been carefully developed for every situation within your business scope, **increasing your efficiency levels while keeping your running costs low.**

We have refined our devices to meet the demands of the modern business world and help you embark on your digital transformation journey.



Efficient document digitisation

In response to increasing digitisation needs, we have improved our devices by integrating them with additional scanning functions such as multiple feed detection, image defect prevention function, and paper jam recovery. As a result, your business can quickly scan and digitise large volumes of documents without interruption.



Streamline document workflows

To give your business an agility boost, our devices can be linked with Kyocera's cloud software such as Kyocera Cloud Print Scan and Kyocera Fleet Services, to further optimise your print and scan environment. When you combine our software with our devices' rapid print and copy speeds, you get a winning formula!



Print and scan non-standard documents

Kyocera's technology meets the unique needs of diverse industries, enabling professionals to print and scan prescriptions, receipts, and delivery slips. Our devices can digitise non-standard paper effortlessly and feature standard specifications for A5 paper and horizontally fed statement paper. We've got you covered!

GENERAL

KYOCERA ECOSYS Laser Colour Multifunctional HyPAS™ solution platform
Operation panel: 177.8 mm (7 inch) full-colour touch panel display, speaker for job notification
Type: Desktop
Engine speed Simplex: Up to 35 pages A4 per minut e.
Engine speed Duplex: Up to 17.5 pages A4 per minute.
Duplex copy speed: Up to 17.5 pages A4 per minute.
Resolution: 1200 x 1200 dpi (print); 600 x 600 dpi (scan/copy)
Recommended Print Volume: 1,200 images per month.
Maximum Life: 600,000 images or 5 years.
Scan Volume: max. 6,000 pages per month.
Warm-up time: Approx. 26 seconds or less.
Time to first print: Approx. 5.7 seconds or less.
Time to first copy: Approx. 6.6 or less (DP); Approx. 6.1 or less (Platen).
CPU: ARM Cortex-A9 Dual core 1.2GHz
Memory: Standard 1.5GB; Max. 3GB (optional).
Standard interfaces: USB 2.0 (Hi-Speed), 2 x USB Host Interface, Gigabit Ethernet (10BASE-T/100BASE-TX/1000BASE-T), optional Wireless LAN (IEEE 802.11b/g/n), 1 x eKUIO slot for optional devices other than FAX, Slot for optional SD Card
Integrated accounting: 100 department codes
Dimensions (W x D x H): Without packaging: 480 x 577.5 x 571.5 mm (without protrusions); 480 x 577.5 x 575 mm (including protrusions); With packaging: 623 x 728 x 789 mm
Weight: Without packaging: Approx. 39 kg (with bundled toner) Approx. 38 kg (without bundled toner) With packaging: 51 kg
Power source: AC 220 ~ 240 V, 50/60 Hz
Power consumption: Printing: 449.1 W Copying: 479.1 W Ready mode: 18.8 W Sleep-mode: 0.5 W
Noise (sound pressure level: ISO 7779/ISO 9296): Operating: 51 dB (LpAm) Stand-by: 30 dB (LpAm)
Safety standards: TÜV/GS, CE
 This unit is manufactured according to ISO 9001 quality standard and ISO 14001 environmental standard.

PAPER HANDLING

All paper capacities quoted are based on paper thickness of max. 0.11 mm. Please use paper recommended by KYOCERA under normal environmental conditions.
Input capacity: Multi-purpose tray: 100 sheets (80 g/m² equivalent). 60–220 g/m² A4, A5, A6, B5, B6, Letter, Legal, Folio, Custom (70 x 140 to 216 x 356 mm), Banner paper up to 1220 mm. Standard universal paper cassette: 250 sheet with 80 g/m². 60–220 g/m²: A4, A5, A6, B5, B6, Letter, Legal, Folio, Custom (105 x 140 to 216 x 356 mm). Max. input capacity with options: 1,850 sheets with 80 g/m².
Duplex: Standard duplex unit, 60–163 g/m², A4, A5, B5, Letter, Legal, Custom (140x 210 mm - 216 x 356 mm).
Document Processor: Dual scan document processor as standard, 100 sheets, 50–120 g/m², A4, A5, A6, B5, Letter, Legal, Custom (105 x 148 to 216 x 356 mm).
Output capacity: 250 sheets (Equivalent to 80 g/m²) face down with paper full sensor

PRINT FUNCTIONS

Controller language: PRESCRIBE
Emulations: PCL6 (5c/XL), KPDL3 (PostScript 3 compatible), PDF, XPS, Open XPS, TIFF, JPEG, URF, PWG Raster, PCLm
Operating systems: All current Windows operating systems, MAC OS X Version 10.9 or higher, Chrome OS, Linux, as well as other operating systems on request.
Fonts/barcodes: 93 outline fonts (PCL6, KPDL3), 4 fonts (Calibri), 4 fonts (Cambria), 1 Bitmap font, 45 types of one-dimensional barcodes, 1 type of two-dimensional barcode (PDF417).
Print features: PDF Direct Print, Internet printing IPP 1.0, E-mail printing, WSD print, secure printing IPP over TLS, Local and network authentication, Network data encryption IPsec, HTTPS, LDAP over TLS, SNMPv3, SMTP over TLS, POP over TLS, Encrypted PDF Direct Print, TLS 1.3, Secure Boot, Run-time Integrity Check, Microsoft Universal Print, Printing for Chrome OS
Mobile printing support: KYOCERA Mobile Print app for iOS and Android, AirPrint, Mopria, Microsoft Universal Print, Wi-Fi Direct (Opt).

COPY FUNCTIONS

Max. original size: A4/Legal.
Continuous copying: 1–999.
Zoom range: 25–400% in 1% steps.
Preset magnification ratios: 5 Reductions / 5 Enlargements.
Image adjustments: Text + Photo, Photo, Text, Chart/Map, Printed document.
Features: Electronic sort (collate), ID card copy, 2in1, 4in1, auto cassette change, Skip blank page, Skip Line, DP Auto-cropping

SCAN FUNCTIONS

Functionality: Scan-to-Email, Scan-to-FTP, Scan-to-SMB, Scan to USB Host, Network TWAIN, WIA, WSD scan, Chrome OS (Scan), AirPrint, Mopria.
Scan speed Simplex: 60 ipm (300 dpi, A4, b/w); 40 ipm (300 dpi, A4 colour)
Scan speed Duplex: 100 ipm (300dpi, A4, b/w); 80 ipm (300 dpi, A4, colour)
Scan resolution: 300 dpi x 300 dpi, 200 dpi x 200 dpi (Default) , 200 dpi x 100 dpi, 600 dpi x 600 dpi , 400 dpi x 400 dpi , 200 dpi x 400 dpi, 1200dpix1200dpi (TWAIN driver, WIAdriver). 256 greyscale per colour
Max. scan size: A4, Legal, Banner paper (max 915mm).
Original recognition: Text, photo, text + photo, light text, optimised for OCR
File types: TIFF (MMR/JPEG compression), JPEG, XPS, Open XPS, PDF (MMR/JPEG compression), PDF/A-1, PDF/A-2, PDF (High compression), Encrypted PDF, MS Office file (Opt), Searchable PDF (Opt)
Features: Banner Scan, Colour scan, integrated address book, Active Directory support, encrypted data transfer, multi send (e-mail, fax, SMB/FTP folder, print) at once, Blank page skip, Border Erase, Digital Signature (Require SSD), DP Auto Crop
FAX FUNCTIONS
Compatibility: Super G3.
Modern speed: Max. 33.6 kbps.
Transmission speed: Max. 3 seconds (IBIG).
Scanning speed: 2.5 seconds or less.
Address book: Personal 200 entries, Group 50 entries
Scanning density: Normal: 8 dot/mm x 3.85 line/mm (200 x 100 dpi) Fine: 8 dot/mm x 7.7 line/mm (200 x 200 dpi) Superfine: 8 dot/mm x 15.4 line/mm (200 x 400 dpi) Ultrafine: 16 dot/mm x 15.4 line/mm (400 x 400 dpi)

Halftone: 256 grey scales
Original size: A4, Legal, A6, Banner (max 915mm)
Compression method: JBIG, MMR, MR, MH
Memory reception: 256 sheets or more
Features: Network fax, duplex transmission and reception, encrypted transmission and reception, polling transmission and reception, broadcast.

CONSUMABLES

Average continuous toner yield in accordance with ISO 19798
TK-5374K: Black 7,000 pages A4.
TK-5374Y, TK-5374M, TK-5374C: Yellow, Magenta and Cyan 5,000 pages A4.
 Starter toner black 3,500 pages and Yellow, Magenta and Cyan 2,500 pages A4

OPTIONS

PF-5150 Paper feeder: Max. 500 sheet with 80 g/m², 60 – 220 g/m², A5R – Legal, 921 x 165.1 (Com6), 114x162 (Youkei2), Max 3 Units
1244/10 Cabinet: for 2-draw configuration
Memory upgrade: 1GB/2GB
Storage Devices for easy document management: HD-17 SSD hard disk: 64GB HD-18 SSD hard disk: 256GB HD-19 SSD hard disk: 512GB
Scan Extension Kit (A): Scan to searchable PDF (embedded OCR) or to MS Office (docx, xlsx, pptx), HD or SD card is needed.

SECURITY OPTIONS

UG-33 AC: ThinPrint support
UG-35: TPM (Trusted Platform Module)
USB IC Card Reader + Card Authentication Kit (B): Support for various authentication keys available.
CRH 12: Card Reader Holder 12
Optional interface: **IB-37:** Wireless LAN (802.11a/b/g/n/ac) with Wi-Fi Direct **IB-50:** Gigabit Ethernet 10BASE-T/100BASE-TX/1000BASE-T **IB-51:** Wireless LAN Interface (802.11b/g/n)

WARRANTY

2 years on-site as standard.

WHAT'S IN THE BOX:

Main unit, starter toner, waste toner box, Quick guide, Safety Guide, Operation panel sheet , power supply cord.

ECOSYS stands for ECOlogy, ECONomy and SYStem printing. With their long-life components, ECOSYS devices are designed to maximise durability and minimise the total cost of ownership with regard to maintenance, administration and consumables. The cartridge-free system means that only the toner has to be replaced regularly. The modular design concept allows you to add workflowenhancing functions as required. Integrated system software provides long-term crossnetwork compatibility. KYOCERA's long-life components cost you and the environment less.



ECOSYS MA3500cix

GENERAL

KYOCERA ECOSYS Laser Colour Multifunctional HyPAS™ solution platform

Operation panel: 177.8 mm (7 inch) full-colour touch panel display, speaker for job notification

Type: Desktop

Engine speed Simplex: Up to 35 pages A4 per minute.

Engine speed Duplex: Up to 17.5 page A4 per minute.

Duplex copy speed: Up to 17.5 pages A4 per minute.

Resolution: 1200 x 1200 dpi (print); 600 x 600 dpi (scan/copy)

Recommended Print Volume: 1,200 images per month.

Maximum Life: 600,000 images or 5 years.

Scan Volume: max. 6,000 pages per month.

Warm-up time: Approx. 26 seconds or less.

Time to first print: Approx. 5.7 seconds or less.

Time to first copy: Approx. 6.6 or less (DP);

Approx. 6.1 or less (Platen).

CPU: ARM Cortex-A9 Dual core 1.2GHz

Memory: Standard 1.5GB; Max. 3GB (optional).

Standard interfaces: USB 2.0 (Hi-Speed), 2 x USB Host

Interface, Gigabit Ethernet (10BASE-T/100BASE-TX/1000BASE-T), optional Wireless LAN (IEEE 802.11b/g/n), 1 x eKUIO

slot for optional devices other than FAX, Slot for optional SD Card

Integrated accounting: 100 department codes

Dimensions (W x D x H): Without packaging:

480 x 577.5 x 571.5 mm (without protrusions);

480 x 577.5 x 575 mm (including protrusions);

With packaging: 623 x 728 x 789 mm

Weight: Without packaging: Approx. 39 kg (with bundled toner)

Approx. 38 kg (without bundled toner)

With packaging: 51 kg

Power source: AC 220 ~ 240 V, 50/60 Hz

Power consumption:

Printing: 449.1 W

Copying: 479.1 W

Ready mode: 18.8 W

Sleep-mode: 0.5 W

Noise (sound pressure level: ISO 7779/ISO 9296):

Operating: 51 dB (LpAm)

Stand-by: 30 dB (LpAm)

Safety standards: TÜV/GS, CE

This unit is manufactured according to ISO 9001 quality

standard and ISO 14001 environmental standard.

PAPER HANDLING

All paper capacities quoted are based on paper thickness of max.

0.11 mm. Please use paper recommended by KYOCERA under

normal environmental conditions.

Input capacity: Multi-purpose tray: 100 sheets (80 g/m² equivalent).

60–220 g/m² A4, A5, A6, B5, B6, Letter, Legal, Folio, Custom (70 x

140 to 216 x 356 mm), Banner paper up to 1220 mm. Standard

universal paper cassette: 250 sheet with 80 g/m². 60–220 g/m². A4,

A5, A6, B5, B6, Letter, Legal, Folio, Custom (105 x 140 to 216 x 356

mm). Max. input capacity with options: 1,850 sheets with 80 g/m².

Duplex: Standard duplex unit, 60–163 g/m², A4, A5, B5,

Letter, Legal, Custom (140x 210 mm - 216 x 356 mm).

Document Processor: Dual scan document processor as standard,

100 sheets, 50–120 g/m², A4, A5, A6, B5,

Letter, Legal, Custom (105 x 148 to 216 x 356 mm).

Output capacity: 250 sheets (Equivalent to 80 g/m²) face down

with paper full sensor

PRINT FUNCTIONS

Controller language: PRESCRIBE

Emulations: PCL6 (5c/XL), KPDL3 (PostScript 3 compatible),

PDF, XPS, Open XPS, TIFF, JPEG, URF, PWG Raster, PCLm

Operating systems: All current Windows operating

systems, MAC OS X Version 10.9 or higher, Chrome OS, Linux, as

well as other operating systems on request.

Fonts/barcodes: 93 outline fonts (PCL6, KPDL3), 4 fonts (Calibri),

4 fonts (Cambria), 1 Bitmap font, 45 types of one-dimensional

barcodes, 1 type of two-dimensional barcode (PDF417).

Print features: PDF Direct Print, Internet printing IPP 1.0,

E-mail printing, WSD print, secure printing IPP over TLS, Local

and network authentication, Network data encryption IPsec,

HTTPS, LDAP over TLS, SNMPv3, SMTP over TLS, POP over

TLS, Encrypted PDF Direct Print, TLS 1.3, Secure Boot, Run-time

Integrity Check, Microsoft Universal Print, Printing for Chrome OS

Mobile printing support: KYOCERA Mobile Print app for iOS

and Android, AirPrint, Mopria, Microsoft Universal Print,

Wi-Fi Direct (Opt).

COPY FUNCTIONS

Max. original size: A4/Legal.

Continuous copying: 1–999.

Zoom range: 25–400% in 1% steps.

Preset magnification ratios: 5 Reductions / 5 Enlargements.

Image adjustments: Text + Photo, Photo, Text, Chart/Map,

Printed document.

Features: Electronic sort (collate), ID card copy, 2in1, 4in1, auto

cassette change, Skip blank page, Skip Line, DP Auto-cropping

SCAN FUNCTIONS

Functionality: Scan-to-Email, Scan-to-FTP, Scan-to-SMB, Scan to

USB Host, Network TWAIN, WIA, WSD scan, Chrome OS (Scan),

AirPrint, Mopria.

Scan speed Simplex: 60 ipm (300 dpi, A4, b/w);

40 ipm (300 dpi, A4 colour)

Scan speed Duplex: 100 ipm (300dpi, A4, b/w);

80 ipm (300 dpi, A4, colour)

Scan resolution: 300 dpi x 300 dpi, 200 dpi x 200 dpi (Default),

200 dpi x 100 dpi, 600 dpi x 600 dpi, 400 dpi x 400 dpi,

200 dpi x 400 dpi, 1200dpi x 1200dpi (TWAIN driver, WIA driver).

256 greyscales per colour

Max. scan size: A4, Legal, Banner paper (max 915mm).

Original recognition: Text, photo, text + photo, light text,

optimised for OCR

File types: TIFF (MMR/JPEG compression), JPEG, XPS, Open XPS,

PDF (MMR/JPEG compression), PDF/A-1, PDF/A-2, PDF (High

compression), Encrypted PDF, MS Office file (Opt),

Searchable PDF (Opt)

Features: Banner Scan, Colour scan, integrated address book,

Active Directory support, encrypted data transfer, multi send

(e-mail, fax, SMB/FTP folder, print) at once, Blank page skip,

Border Erase, Digital Signature (Require SSD), DP Auto Crop

CONSUMABLES

Average continuous toner yield in accordance with ISO 19798

TK-5374K: Black 7,000 pages A4

TK-5374Y, TK-5374M, TK-5374C: Yellow, Magenta and Cyan 5,000

pages A4.

Starter toner black 3,500 pages and Yellow, Magenta and Cyan

2,500 pages A4.

OPTIONS

PF-510 Paper feeder: Max. 500 sheet with 80g/m², 60 - 220

g/m², A5R - Legal, 92.1 x 165.1 (Com6), 114x162 (Youkei2), Max

3 Units

1244/10 Cabinet: for 2 draw configuration

Memory upgrade: 1GB/2GB

Storage Devices for easy document management:

HD-17 SSD hard disk: 64GB

HD-18 SSD hard disk: 256GB

HD-19 SSD hard disk: 512GB

Scan Extension Kit (A): Scan to searchable PDF (embedded OCR)

or to MS Office (docx, xlsx, pptx), HD or SD card is needed.

SECURITY OPTIONS

UG-33 AC: ThinPrint support

UG-35: TPM (Trusted Platform Module)

USB IC Card Reader + Card Authentication Kit (B):

Support for various authentication keys available.

CRH 12: Card Reader Holder 12

Optional interface:

IB-37: Wireless LAN (802.11a/b/g/n/ac) with Wi-Fi Direct

IB-50: Gigabit Ethernet 10BASE-T/100BASE-TX/

1000BASE-T

IB-51: Wireless LAN Interface (802.11b/g/n)

WARRANTY

2 years on-site as standard.

WHAT'S IN THE BOX:

Main unit, starter toner, waste toner box, Quick guide, Safety

Guide, Operation panel sheet, power supply cord.

ECOSYS stands for ECOlogy, ECONomy and SYSTEM printing. With their long-life components, ECOSYS devices are designed to maximise durability and minimise the total cost of ownership with regard to maintenance, administration and consumables. The cartridge-free system means that only the toner has to be replaced regularly. The modular design concept allows you to add workflowenhancing functions as required. Integrated system software provides long-term crossnetwork compatibility. KYOCERA's long-life components cost you and the environment less.

HyPAS™



ECOSYS MA4000 Series



GENERAL

KYOCERA ECOSYS Laser Colour Multifunctional HyPAS™ solution platform
Operation panel: 177.8 mm (7 inch) full-colour touch panel display, speaker for job notification
Type: Desktop
Engine speed Simplex: Up to 40 pages A4 per minute.
Engine speed Duplex: Up to 20 pages A4 per minute.
Duplex copy speed: Up to 17 pages A4 per minute.
Resolution: 1200 x 1200 dpi (print); 600 x 600 dpi (scan/copy)
Recommended Print Volume: 1,900 images per month.
Maximum Life: 600,000 images or 5 years.
Scan Volume: max. 6,000 pages per month.
Warm-up time: Approx. 26 seconds or less.
Time to first print: Approx. 5.4 seconds or less.
Time to first copy: Approx. 6.2 or less (DP); Approx. 5.8 or less (Platen).
CPU: ARM Cortex-A9 Dual core 1.2GHz
Memory: Standard 2GB; Max. 3GB (optional).
Standard interfaces: USB 2.0 (Hi-Speed), 2 x USB Host Interface, Gigabit Ethernet (10BASE-T/100BASE-TX/1000BASE-T), optional Wireless LAN (IEEE 802.11b/g/n), 1 x eKUIO slot for optional devices other than FAX, Slot for optional SD Card
Integrated accounting: 100 department codes
Dimensions (W x D x H): Without packaging: 480 x 577.5 x 571.5 mm (without protrusions); 480 x 577.5 x 575 mm (including protrusions); With packaging: 623 x 728 x 789 mm
Weight: Without packaging: Approx. 39 kg (with bundled toner) Approx. 38 kg (without bundled toner) With packaging: 51 kg
Power source: AC 220 ~ 240 V, 50/60 Hz
Power consumption:
 Printing: 573.6 W
 Copying: 575.0 W
 Ready mode: 18.8 W
 Sleep-mode: 0.5 W
Noise (sound pressure level: ISO 7779/ISO 9296):
 Operating: 53 dB (LpAm)
 Stand-by: 30 dB (LpAm)
Safety standards: TÜV/GS, CE
 This unit is manufactured according to ISO 9001 quality standard and ISO 14001 environmental standard.

PAPER HANDLING

All paper capacities quoted are based on paper thickness of max. 0.11 mm. Please use paper recommended by KYOCERA under normal environmental conditions.
Input capacity: Multi-purpose tray: 100 sheets (80 g/m² equivalent), 60–220 g/m² A4, A5, A6, B5, B6, Letter, Legal, Folio, Custom (70 x 140 to 216 x 356 mm), Banner paper up to 1220 mm. Standard universal paper cassette: 250 sheet with 80 g/m². 60–220 g/m². A4, A5, A6, B5, B6, Letter, Legal, Folio, Custom (105 x 140 to 216 x 356 mm). Max. input capacity with options: 1,850 sheets with 80 g/m²
Duplex: Standard duplex unit, 60–163 g/m², A4, A5, B5, Letter, Legal, Custom (140x 210 mm - 216 x 356 mm).
Document Processor: Dual scan document processor as standard, 100 sheets, 50–120 g/m², A4, A5, A6, B5, Letter, Legal, Custom (105 x 148 to 216 x 356 mm).
Output capacity: 250 sheets (Equivalent to 80 g/m²) face down with paper full sensor

PRINT FUNCTIONS

Controller language: PRESCRIBE
Emulations: PCL6 (5c/XL), KPDL3 (PostScript 3 compatible), PDF, XPS, Open XPS, TIFF, JPEG, URF, PWG Raster, PCLm
Operating systems: All current Windows operating systems, MAC OS X Version 10.9 or higher, Chrome OS, Linux, as well as other operating systems on request.
Fonts/barcodes: 93 outline fonts (PCL6, KPDL3), 4 fonts (Calibri), 4 fonts (Cambria), 1 Bitmap font, 45 types of one-dimensional barcodes, 1 type of two-dimensional barcode (PDF417).
Print features: PDF Direct Print, Internet printing IPP 1.0, E-mail printing, WSD print, secure printing IPP over TLS, Local and network authentication, Network data encryption IPsec, HTTPS, LDAP over TLS, SNMPv3, SMTP over TLS, POP over TLS, Encrypted PDF Direct Print, TLS 1.3, Secure Boot, Run-time Integrity Check, Microsoft Universal Print, Printing for Chrome OS
Mobile printing support: KYOCERA Mobile Print app for iOS and Android, AirPrint, Mopria, Microsoft Universal Print, Wi-Fi Direct (Opt).

COPY FUNCTIONS

Max. original size: A4/Legal.
Continuous copying: 1–999.
Zoom range: 25–400% in 1% steps.
Preset magnification ratios: 5 Reductions / 5 Enlargements.
Image adjustments: Text + Photo, Photo, Text, Chart/Map, Printed document.
Features: Electronic sort (collate), ID card copy, 2in1, 4in1, auto cassette change, Skip blank page, Skip Line, DP Auto-cropping

SCAN FUNCTIONS

Functionality: Scan-to-Email, Scan-to-FTP, Scan-to-SMB, Scan to USB Host, Network TWAIN, WIA, WSD scan, Chrome OS (Scan), AirPrint, Mopria.
Scan speed Simplex: 60 ipm (300 dpi, A4, b/w); 50 ipm (300 dpi, A4 colour)
Scan speed Duplex: 120 ipm (300dpi, A4, b/w); 100 ipm (300 dpi, A4, colour)
Scan resolution: 300 dpi x 300 dpi, 200 dpi x 200 dpi (Default), 200 dpi x 100 dpi, 600 dpi x 600 dpi, 400 dpi x 400 dpi, 200 dpi x 400 dpi, 1200dpix1200dpi (TWAIN driver, WIA driver). 256 greyscale per colour
Max. scan size: A4, Legal, Banner paper (max 915mm).
Original recognition: Text, photo, text + photo, light text, optimised for OCR
File types: TIFF (MMR/JPEG compression), JPEG, XPS, Open XPS, PDF (MMR/JPEG compression), PDF/A-1, PDF/A-2, PDF (High compression), Encrypted PDF, MS Office file (Opt), Searchable PDF (Opt)
Features: Banner Scan, Colour scan, integrated address book, Active Directory support, encrypted data transfer, multi send (e-mail, fax, SMB/FTP folder, print) at once, Blank page skip, Border Erase, Digital Signature (Require SSD), DP Auto Crop

FAX FUNCTIONS
Compatibility: Super G3.
Modern speed: Max. 33.6 kbps.
Transmission speed: Max. 3 seconds (JBIG).
Scanning speed: 2.5 seconds or less.
Address book: Personal 200 entries, Group 50 entries
Scanning density:
 Normal: 8 dot/mm x 3.85 line/mm (200 x 100 dpi)
 Fine: 8 dot/mm x 7.7 line/mm (200 x 200 dpi)
 Superfine: 8 dot/mm x 15.4 line/mm (200 x 400 dpi)
 Ultrafine: 16 dot/mm x 15.4 line/mm (400 x 400 dpi)

Half-tone: 256 grey scales
Original size: A4, Legal, A6, Banner (max 915mm)
Compression method: JBIG, MMR, MR, MH
Memory reception: 256 sheets or more
Features: Network fax, duplex transmission and reception, encrypted transmission and reception, polling transmission and reception, broadcast.

CONSUMABLES

Average continuous toner yield in accordance with ISO 19798
TK-5384K: Black 13,000 pages
TK-5384Y, TK-5384M, TK-5384C: Yellow, Magenta and Cyan 10,000 pages A4.
 Starter toner black 6,000 pages and Yellow, Magenta and Cyan 5,000 pages A4.

OPTIONS

PF-5150 Paper feeder: Max. 500 sheet with 80g/m², 60 - 220 g/m², A5R - Legal, 92.1 x 165.1 (Com6), 114x162 (Youkei2), Max 3 Units
1244/10 Cabinet: for 2-draw configuration
Memory upgrade: 1GB
Storage Devices for easy document management:
 HD-17 SSD hard disk: 64GB
 HD-18 SSD hard disk: 256GB
 HD-19 SSD hard disk: 512GB
Scan Extension Kit (A): Scan to searchable PDF (embedded OCR) or to MS Office (docx, xlsx, pptx), HD or SD card is needed.

SECURITY OPTIONS

UG-33 AC: ThinPrint support
UG-35: TPM (Trusted Platform Module)
USB IC Card Reader + Card Authentication Kit (B): Support for various authentication keys available.
CRH 12: Card Reader Holder 12
Optional interface:
IB-37: Wireless LAN (802.11a/b/g/n/ac) with Wi-Fi Direct
IB-50: Gigabit Ethernet 10BASE-T/100BASE-TX/1000BASE-T
IB-51: Wireless LAN Interface (802.11b/g/n)

WARRANTY

2 years on-site as standard.

WHAT'S IN THE BOX:

Main unit, starter toner, waste toner box, Quick guide, Safety Guide, Operation panel sheet, power supply cord.

ECOSYS stands for ECOlogy, ECONomy and SYStem printing. With their long-life components, ECOSYS devices are designed to maximise durability and minimise the total cost of ownership with regard to maintenance, administration and consumables. The cartridge-free system means that only the toner has to be replaced regularly. The modular design concept allows you to add workflowenhancing functions as required. Integrated system software provides long-term crossnetwork compatibility. KYOCERA's long-life components cost you and the environment less.



ECOSYS PA3500cx

GENERAL

KYOCERA ECOSYS Laser Colour Printer

Operation panel: 5Line display with back light and numeric keypad

Type: Desktop

Engine speed Simplex: Up to 35 pages A4 per minut.;

Engine speed Duplex: Up to 17.5 pages A4 per minute.

Resolution: 1200 x 1200 dpi (print),
600 x 600 dpi (scan/copy)

Recommended Print Volume: 1,200 images per month

Maximum Life: 600,000 images or 5 years

Warm-up time: Approx. 23 seconds or less

Time to first print: Approx. 5.7 seconds or less

CPU: ARM Cortex-A9 Dual core 1.2GHz

Memory: Standard 1 GB

Standard interfaces: USB 2.0 (Hi-Speed), 2 x USB Host

Interface, Gigabit Ethernet (10BASE-T/100BASE-TX

/1000BASE-T), optional Wireless LAN (IEEE 802.11b/g/n),

1 x eKUIO slot for optional devices other than FAX, Slot for

optional SD Card

Integrated accounting: 100 department codes

Dimensions (W x D x H): Without packaging:

394 x 531.5 x 392.5 mm (without protrusions);

394 x 533 x 392.5 mm (including protrusions);

With packaging: 702 x 567 x 561 mm

Weight: Without packaging:

Approx. 33 kg (with bundled toner)

Approx. 32 kg (without bundled toner)

With packaging: 40 kg

Power source: AC 220 ~ 240 V, 50/60 Hz

Power consumption:

Printing: 496.4W

Ready mode: 11.8 W

Sleep-mode: 0.4 W (default)

Noise (sound pressure level: ISO 7779/ISO 9296):

Operating: 51 dB (LpAm)

Stand-by: 30 dB (LpAm)

Safety standards: TÜV/GS, CE

This unit is manufactured according to ISO 9001 quality standard and ISO 14001 environmental standard.

PAPER HANDLING

All paper capacities quoted are based on paper thickness of max. 0.11 mm. Please use paper recommended by KYOCERA under normal environmental conditions.

Input capacity: Multi-purpose tray: 100 sheets (80 g/m² equivalent).

60–220 g/m². A4, A5, A6, B5, B6, Letter, Legal, Folio, Custom (70 x 140 to 216 x 356 mm), Banner paper up to 1220 mm. Standard universal paper cassette:

500 sheet with 80 g/m²,

60–220 g/m². A4, A5, A6, B5, B6, Letter, Legal,

Folio, Custom (105 x 140 to 216 x 356 mm).

Max. input capacity with options: 2,100 sheets

with 80 g/m².

Duplex: Standard duplex unit 60–163 g/m², A4, A5, A6,

B5, Letter, Legal, Custom (140 x 210 mm - 216 x 356 mm).

Output capacity: 250 sheets (Equivalent to 80 g/m²) face

down with paper full sensor

PRINT FUNCTIONS

Controller language: PRESCRIBE

Emulations: PCL6 (5c/XL), KPDL3 (PostScript 3 compatible),

PDF, XPS, Open XPS, TIFF, JPEG, URF, PWG Raster, PCLm

Operating systems: All current Windows operating systems,

MAC OS X Version 10.9 or higher, Chrome OS, Linux,

as well as other operating systems on request

Fonts/barcodes: 93 outline fonts (PCL6, KPDL3), 4 fonts

(Calibri), 4 fonts (Cambria), 1 Bitmap font, 45 types of

one-dimensional barcodes, 1 type of two-dimensional

barcode (PDF417)

Print features: PDF Direct Print, Internet printing IPP

1.0, E-mail printing, WSD print, secure printing IPP over

TLS, Local and network authentication, Network data

encryption IPsec, HTTPS, LDAP over TLS, SNMPv3,

SMTP over TLS, POP over TLS, Encrypted PDF Direct

Print, TLS 1.3, Secure Boot, Run-time Integrity Check,

Microsoft Universal Print, Printing for Chrome OS

Mobile printing support: KYOCERA Mobile Print app for

iOS and Android, AirPrint, Mopria, Microsoft Universal Print,

Wi-Fi Direct (Opt)

CONSUMABLES

Average continuous toner yield in accordance with ISO 19798

TK-5374K: Black toner 7,000 pages A4

TK-5374Y, TK-5374M, TK-5374C: Yellow, Magenta and Cyan
5,000 pages for A4

Starter toner black 3,500 pages and Yellow, Magenta and
Cyan 2,500 pages A4.

OPTIONS

PF-5150 Paper feeder: Max. 500 sheet with 80g/m², 60 - 220
g/m², ASR - Legal, 921 x 165.1 (Com6), 114x162 (Youkeiz), Max
3 Units

1244/10 Cabinet: for 2-draw configuration

Storage Devices for easy document management:

HD-17 SSD hard disk: 64GB

HD-18 SSD hard disk: 256GB

HD-19 SSD hard disk: 512GB

SECURITY OPTIONS

UG-33 AC: ThinPrint support

UG-35: TPM (Trusted Platform Module)

USB IC Card Reader + Card Authentication Kit (B): Support
for various authentication keys available.

CRH 12: Card Reader Holder 12

Optional interface:

IB-37: Wireless LAN (802.11a/b/g/n/ac) with Wi-Fi Direct

IB-50: Gigabit Ethernet 10BASE-T/100BASE-TX/ 1000BASE-

T

IB-51: Wireless LAN Interface (802.11b/g/n)

WARRANTY

2 years on-site as standard.

WHAT'S IN THE BOX:

Main unit, initial toner, waste toner box, Quick guide, Safety
Guide, Operation panel sheet , power supply cord.

ECOSYS stands for ECOlogy, ECONomy and SYSTEM printing.

With their long-life components, ECOSYS devices are designed

to maximise durability and minimise the total cost of ownership

with regard to maintenance, administration and consumables.

The cartridge-free system means that only the toner has to be

replaced regularly. The modular design concept allows you to add

workflowenhancing functions as required. Integrated system software

provides long-term crossnetwork compatibility. KYOCERA's long-life

components cost you and the environment less.



ECOSYS MA4000 Series



GENERAL

KYOCERA ECOSYS Laser Colour Printer
Operation panel: 5Line display with back light and numeric keypad
Type: Desktop
Engine speed Simplex: Up to 40 pages A4 per minute.
Engine speed Duplex: Up to 33 pages A4 per minute.
Resolution: 1200 x 1200 dpi (print), 600 x 600 dpi (scan/copy)
Recommended Print Volume: 1,900 images per month
Maximum Life: 600,000 images or 5 years
Warm-up time: Approx. 21 seconds or less
Time to first print: Approx. 5.4 seconds or less
CPU: ARM Cortex-A9 Dual core 1.2GHz
Memory: Standard 1 GB, Max. 3 GB (optional)
Standard interfaces: USB 2.0 (Hi-Speed), 2 x USB Host Interface, Gigabit Ethernet (10BASE-T/100BASE-TX /1000BASE-T), optional Wireless LAN (IEEE 802.11b/g/n), 1 x eKUIO slot for optional devices other than FAX, Slot for optional SD Card
Integrated accounting: 100 department codes
Dimensions (W x D x H): Without packaging: 394 x 531.5 x 455 mm (without protrusions); 394 x 533 x 455 mm (including protrusions); With packaging: 702 x 567 x 561 mm
Weight: Without packaging: Approx. 34 kg (with bundled toner) Approx. 33 kg (without bundled toner) With packaging: 41 kg
Power source: AC 220 ~ 240 V, 50/60 Hz
Power consumption: Printing: 533.3W Ready mode: 11.8 W Sleep-mode: 0.4 W (default)
Noise (sound pressure level: ISO 7779/ISO 9296): Operating: 53 dB (LpAm) Stand-by: 30 dB (LpAm)
Safety standards: TÜV/GS, CE
 This unit is manufactured according to ISO 9001 quality standard and ISO 14001 environmental standard.

PAPER HANDLING

All paper capacities quoted are based on paper thickness of max. 0.11 mm. Please use paper recommended by KYOCERA under normal environmental conditions.
Input capacity: Multi-purpose tray: 100 sheets (80 g/m² equivalent).
 60–220 g/m², A4, A5, A6, B5, B6, Letter, Legal, Folio, Custom (70 x 140 to 216 x 356 mm), Banner paper up to 1220 mm. Standard universal paper cassette: 500 sheet with 80 g/m², 60–220 g/m², A4, A5, A6, B5, B6, Letter, Legal,

Folio, Custom (105 x 140 to 216 x 356 mm).
 Max. input capacity with options: 2,100 sheets with 80 g/m²,
Duplex: Standard duplex unit 60–163 g/m². A4, A5, A6, B5, Letter, Legal, Custom (140 x 210 mm - 216 x 356 mm).
Output capacity: 500 sheets (Equivalent to 80 g/m²) face down with paper full sensor

PRINT FUNCTIONS

Controller language: PRESCRIBE
Emulations: PCL6 (5c/XL), KPDL3 (PostScript 3 compatible), PDF, XPS, Open XPS, TIFF, JPEG, URF, PWG Raster, PCLm
Operating systems: All current Windows operating systems, MAC OS X Version 10.9 or higher, Chrome OS, Linux, as well as other operating systems on request
Fonts/barcodes: 93 outline fonts (PCL6, KPDL3), 4 fonts (Calibri), 4 fonts (Cambria), 1 Bitmap font, 45 types of one-dimensional barcodes, 1 type of two-dimensional barcode (PDF417)
Print features: PDF Direct Print, Internet printing IPP 1.0, E-mail printing, WSD print, secure printing IPP over TLS, Local and network authentication, Network data encryption IPsec, HTTPS, LDAP over TLS, SNMPv3, SMTP over TLS, POP over TLS, Encrypted PDF Direct Print, TLS 1.3, Secure Boot, Run-time Integrity Check, Microsoft Universal Print, Printing for Chrome OS
Mobile printing support: KYOCERA Mobile Print app for iOS and Android, AirPrint, Mopria, Microsoft Universal Print, Wi-Fi Direct (Opt)

CONSUMABLES

Average continuous toner yield in accordance with ISO 19798
TK-5384K: Black 13,000 pages A4
TK-5384Y, TK-5384M, TK-5384C: Yellow, Magenta and Cyan 10,000 pages A4
 Starter toner black 6,000 pages and Yellow, Magenta and Cyan 5,000 pages A4

OPTIONS

PF-5150 Paper feeder: Max. 500 sheet with 80 g/m², 60 - 220 g/m², A5R - Legal, 92.1 x 165.1 (Com6), 114x162 (Youkei2), Max 3 Units
1244/10 Cabinet: for 2-draw configuration
Memory upgrade: 1GB/2GB
Storage Devices for easy document management:
 HD-17 SSD hard disk: 64GB
 HD-18 SSD hard disk: 256GB
 HD-19 SSD hard disk: 512GB

SECURITY OPTIONS

UG-33 AC: ThinPrint support
UG-35: TPM (Trusted Platform Module)
USB IC Card Reader + Card Authentication Kit (B): Support for various authentication keys available.
CRH 12: Card Reader Holder 12
Optional interface:
IB-37: Wireless LAN (802.11a/b/g/n/ac) with Wi-Fi Direct
IB-50: Gigabit Ethernet 10BASE-T/100BASE-TX/1000BASE-T
IB-51: Wireless LAN Interface (802.11b/g/n)

WARRANTY

2 year on-site as standard.

WHAT'S IN THE BOX:

Main unit, initial toner, waste toner box, Quick guide, Safety Guide, Operation panel sheet , power supply cord.

ECOSYS stands for ECOlogy, ECONomy and SYStem printing. With their long-life components, ECOSYS devices are designed to maximise durability and minimise the total cost of ownership with regard to maintenance, administration and consumables. The cartridge-free system means that only the toner has to be replaced regularly. The modular design concept allows you to add workflowenhancing functions as required. Integrated system software provides long-term crossnetwork compatibility. KYOCERA's long-life components cost you and the environment less.



KYOCERA Document Solutions Partner

JUN2023ECOSYSPA4000cx/VER1.0

KYOCERA Document Solutions Australia
 Ph: 13 59 62
 www.kyoceradocumentsolutions.com.au

KYOCERA Document Solutions New Zealand
 Ph: 0800 459 623
 www.kyoceradocumentsolutions.co.nz



* KYOCERA Document Solutions does not warrant that any specifications mentioned will be error-free. Specifications are subject to change without notice. Information is correct at time of going to press. All other brand and product names may be registered trademarks or trademarks of their respective holders and are hereby acknowledged.
 ** Depending on the country