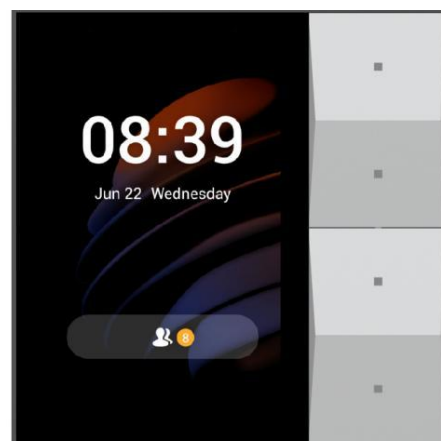


*New hassle-free smart control center for your home*

The akubela HyPanel Lite, a smart home center panel with a Linux operating system. The ALL IN ONE design integrates smart intercom, ZigBee gateway and home automation, and is compatible with plentiful ecosystem. Multi-modal interaction can be easily used by the whole family, offering the excellent smart home experience.

*At a Glance*

- 3.27" touch screen with energy saving mode
- 4 metal buttons, suitable for the whole family
- Smart intercom, ZigBee gateway, home automation ALL IN ONE
- Kinds of sensors built-in
- Standard flush mounted box
- Built in with a 2-gang switch and a digital input port



## Basic Information

- Model Number: KS41-KNX-EU
- KNX Power Supply: 21 ~ 30VDC  
Rated Current: 12mA/21V
- AUX Power Supply: 21 ~ 30VDC  
Rated Current: 210mA/24V, 170mA/30V
- Maximum Power Consumption: 5W
- Digital Input: 1 gang 0 - 5VDC
- Dry Contact Output: 2 gang, 100 ~ 240VAC;  
Rated Current: 4A;  
Wire Range: 0.75 ~ 1.6mm<sup>2</sup> (18 ~ 15AWG)
- Operation System: Linux
- DDR/Flash: 128MB/256MB
- Wi-Fi: IEEE802.11 b/g/n, @2.4GHz
- Bluetooth: Bluetooth 4.2
- Ethernet Port: 1×RJ45, 10/100Mbps adaptive
- ZigBee: ZigBee 3.0
- ZigBee Sub-Device Limit: 32
- Microphone: Dual microphones, -26dBFS
- Speaker: Single speaker, 8Ω/1.5W

## Appearance

- Material: Metal buttons, V0 fireproof PC
- Screen: 3.27" touch screen
- Screen Resolution: 320×480 pixels
- Screen Brightness: 220 cd/m<sup>2</sup>



## Sensors Built In

- Proximity Sensor: 30 ~ 60cm
- Light Sensor: Low-level lux detection
- Temperature Sensor:  $\pm 1^{\circ}\text{C}$ , range:  $-10^{\circ}\text{C}$  ~  $55^{\circ}\text{C}$
- Humidity Sensor:  $\pm 5\%$ , range: 10% ~ 90%RH, without condensation

## Working Environment

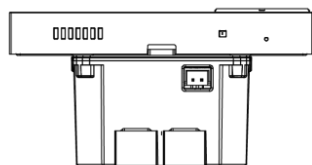
- Environment: For indoor use only

- Working Humidity: 10% ~ 90%RH, without condensation
- Working Temperature:  $-10^{\circ}\text{C}$  ~  $55^{\circ}\text{C}$
- Storage Temperature:  $-20^{\circ}\text{C}$  ~  $65^{\circ}\text{C}$
- IP Rating: IP20

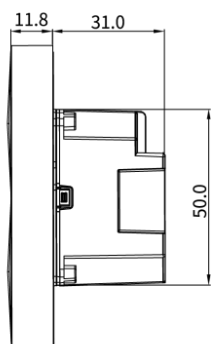
## Installation

- Installation: Wall flush mounting
- Flush Mounted Module: EU/UK standard

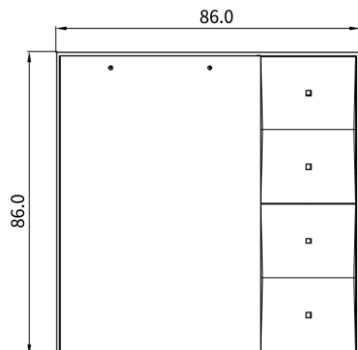
## Product Dimension Diagram (mm)



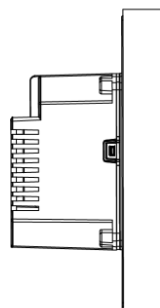
⑤ BOTTOM VIEW



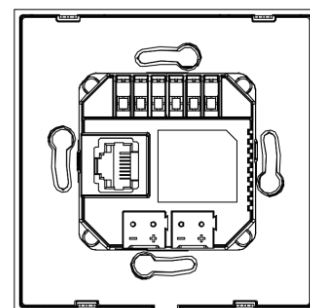
② RIGHT VIEW



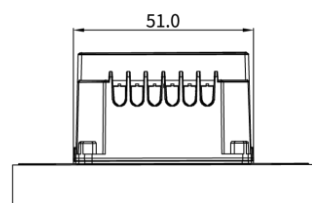
① FRONT VIEW



③ LEFT VIEW



④ BACK VIEW



⑥ TOP VIEW