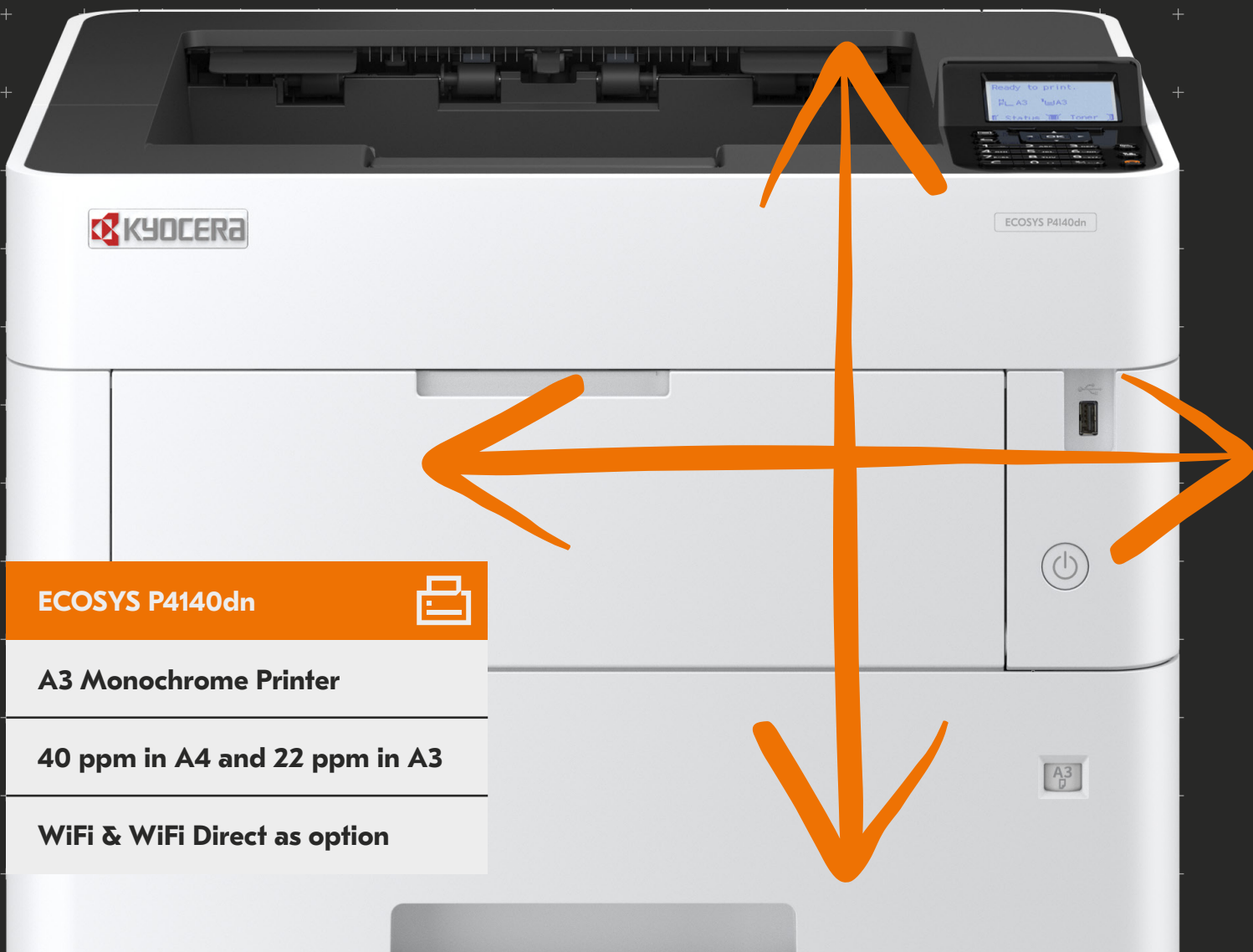


Flexibility and economy.

This compact A3 black and white printer offers an expandable paper capacity of up to 6 paper trays for flexible paper handling. Plus this device knows exactly how to impress with comprehensive standard security features for optional SSD and ECOSYS long-life technology.



ECOSYS P4140dn



A3 Monochrome Printer

40 ppm in A4 and 22 ppm in A3

WiFi & WiFi Direct as option

GENERAL

KYOCERA ECOSYS Laser Monochrome Printer

Operation panel:

5 line LCD back light display with alphanumeric keypad

Engine speed: Up to 40/22 pages A4/A3 per minute,

Duplex print speed: Up to 28/11 pages A4/A3 per minute

Resolution: 1,200 × 1,200 dpi

Warm-up time: Approx. 18 seconds or less

Time to first print: Approx. 6.3 seconds or less

CPU: ARM Cortex-A9 1200MHz

Memory: 512MB (std.), 2.5GB RAM (max.)

Standard interfaces: USB 2.0 (Hi-Speed), 2 × USB Host Interfaces,

Gigabit Ethernet (10Base-T/100Base-TX/1000base-T), Slot for

optional internal print server or SSD hard disc, Slot for optional

SD/SDHC-Card

Integrated accounting: 100 accounts

Dimensions (W × D × H):

477 mm × 410 mm × 343mm including projections

Weight: Main unit incl. toner: approx. 21kg

Power source: AC 220–240V, 50/60Hz

Power consumption:

Print Mode: 632W

Ready Mode: 11W

Sleep Mode: 0.5W

Noise (sound pressure level ISO 7779 measurement distance

of 1 meter):

Print Mode: 50.7dB(A) L_{pA}

Quiet Mode (at reduced print speed): 47.9dB(A) L_{pA}

Ready Mode: Not measurable

Safety standards: TÜV/GS, CE.

This unit is manufactured according to ISO 9001 quality standard

and ISO 14001 environmental standard.

PAPER HANDLING

All paper capacities quoted are based on paper thickness of max. 0.11mm. Please use paper recommended by Kyocera under normal environmental conditions.

Input capacity: Multi-purpose tray: 100 sheets, 60–220g/m², A3, B4, A4R, A4, A5, A6R, B5, Letter, LetterR, Legal, Ledger, Custom (70 × 148mm to 297 × 1220mm);

Universal paper cassette: 500 sheets, 60–120g/m², A3, B4, A4R, A4, A5, A6R, B5, Letter, LetterR, Legal, Ledger, Custom (105 × 148mm to 297 × 432mm);

Max. input capacity incl. options: 2,600 sheets

Duplex: Duplex as standard supports 60–120g/m², A3–A5R

Output capacity: Standard 500 sheets face-down with paper

full sensor, face-up 250 sheets with PT-4100

PRINT FUNCTIONS

Controller language: PRESCRIBE

Emulations: PCL6 (PCL5c/PCL-XL), (KPD L 3), PDF Direct Print 1.7,

XPS Direct Print, Open XPS, TIFF/JPEG Direct Print, IBM Proprinter

X24E, Epson LQ-850, Line Printer

Operating systems: All current Windows operating systems, MAC OS X Version 10.9 or higher, Unix, Linux, as well as other operating systems on request

Fonts/barcodes: 93 outline fonts (PCL), 136 fonts (KPD L 3), 8 fonts

(Windows Vista), 1 Bitmap font, 79 barcodes (e.g. EAN8, EAN13,

EAN128) with automatic generation of checkmarks as well as

support of two-dimensional barcodes PDF-417 under PRESCRIBE

(PCL and other barcodes available as an option)

Print features: Toner save mode, N-Up printing (multiple pages

on one sheet), Duplex print (double side printing), Proof and hold

for multiple set printing, Poster print (multiple sheets for one

page), Banner print up to 1220 mm, e-mail printing, Internet-

Printing IPP 1.0, WSD print

Security features: Secure printing via SSL, Private print via

Pin code protection, Encrypted PDF Direct Print, Security

watermark, Secure documents stored on optional SSD with free

activation of data security kit functionality (data encryption

and secure overwrite-erase of obsolete information) and data

sanitization for end of life preparation, Secured communication

with IPSec, HTTPS, SNMPv3, IPP over SSL, Access control via

local and network authentication (Kerberos, NTLM, 802.1x), user

administration, network port restrictions, blocking of interfaces,

block of USB drives and operation panel lock

Mobile printing support: AirPrint, Mopria, Google Cloud Print

compliant, Direct Wi-Fi (optional), MyPanel and KYOCERA

Mobile Print app for iOS and Android

CONSUMABLES

Average continuous toner yield in accordance with ISO/IEC 19752.

TK-7314 Toner Kit: Microfine toner black for 15,000 pages A4,

Capacity of starter toner is 7,500 pages A4

OPTIONS

PF-4110 Paper feeder: 1 × 500 sheets; 60–120g/m²; A3, B4,

A4-R, A4, A5, B5, Letter, Letter-R, Legal, Ledger, Custom

(148 × 210 mm to 297 × 432mm) (max. 4 units)

CA-3100: Caster unit with rollers provides increased stability

(Mandatory when mounting 4 stages of PF-4110)

PT-4100: 250 sheets face-up output tray

Memory upgrade:

MD3-1024: 1GB

MDDR3-2G: 2GB

HD-6: 32GB SSD

HD-7: 128GB SSD

Card Authentication Kit (B) AC:

USB IC Card Reader supports various authentication card keys

UG-33: ThinPrint support

Optional interfaces:

IB-36: Direct Wi-Fi Interface

IB-50: Gigabit Ethernet: 10BaseT/100BaseTX/1000BaseT (RJ45)

IB-51: Wireless LAN (802.11b/g/n)

IB-32B: IEEE1284 interface

WARRANTY

Standard warranty: 2-year onsite warranty

Long-life unit warranty: Kyocera guarantees the drum and

developer for 3 years or 500,000 pages (whichever occurs

sooner), provided each device is used and cleaned in accordance

with the service instructions.

Kyocera Easy Care (ECO-065): Up to 4-year on-site warranty

extensions available for product and options.

ECOSYS stands for ECOlogy, ECONomy and SYStem printing. With their long-life components, ECOSYS devices are designed to maximise durability and minimise the total cost of ownership with regard to maintenance, administration and consumables. The cartridge-free system means that only the toner has to be replaced regularly. The modular design concept allows you to add workflowenhancing functions as required. Integrated system software provides long-term crossnetwork compatibility. Kyocera's long-life components cost you and the environment less.



KYOCERA Document Solutions Partner

APRIL2020DSECOSSYP4140DN/VER1.0

KYOCERA Document Solutions Australia

Ph: 13 59 62

www.kyoceradocumentsolutions.com.au

KYOCERA Document Solutions New

Zealand Ph: 0800 459 623

www.kyoceradocumentsolutions.co.nz



kyoceradocumentsolutions.com.au

Kyocera Document Solutions does not warrant that any specifications mentioned will be error-free. Specifications are subject to change without notice. Information is correct at time of going to press. All other brand and product names may be registered trademarks or trademarks of their respective holders and are hereby acknowledged.

KYOCERA Document Solutions New Zealand is the trading name of the New Zealand branch of KYOCERA Document Solutions Australia Pty Ltd a corporation incorporated in Australia.