

L24ei / L36ei Scanner Quick Start Guide

P/N: 5600T230_Rev001

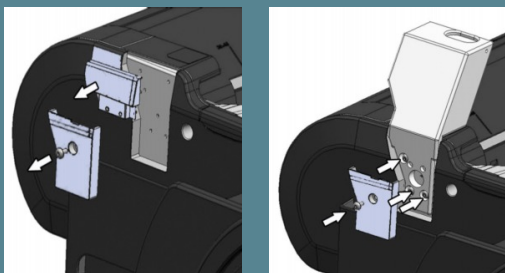


L24ei / L36ei Scanner Quick Start Guide

P/N:5600T230_Rev001

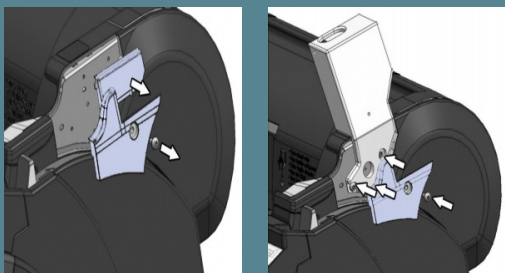
Installation to a printer

1



Left side: Remove panels from the printer as shown. Fit the left scanner mount using 3 of the screws supplied, and then replace lower cover only.

2



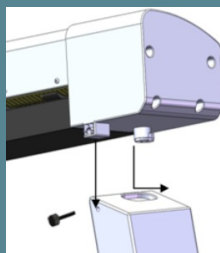
Right side: Remove panels from the printer as shown. Fit the right scanner mount using 3 of the screws supplied, and then replace lower cover only.

3



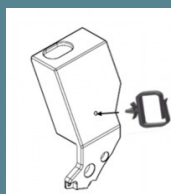
Place scanner on scanner mounts.

4



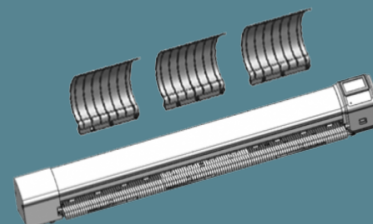
Place the scanner's feet in the holes on top of the scanner mounts and pull the scanner to the front. Secure in place using the 2 thumb screws provided.

5



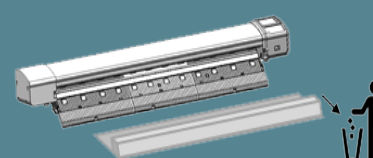
Fit Cable Clips.

6



Fit Document Return Guides to scanner.

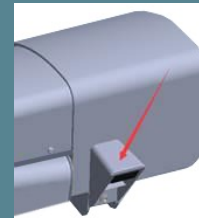
7



Remove shipping packing from scanner.

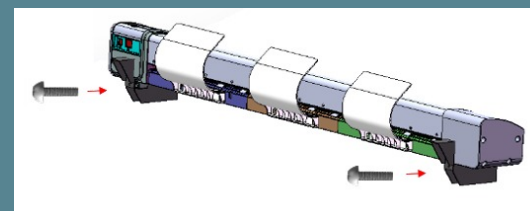
Installation to a desktop

1



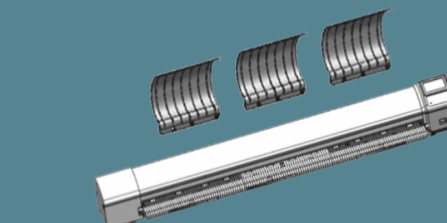
Fit the desktop feet to scanner.

2



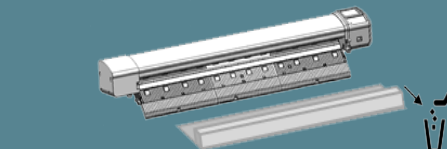
Fit the locking screw.

3



Fit Document Return Guides to scanner.

4



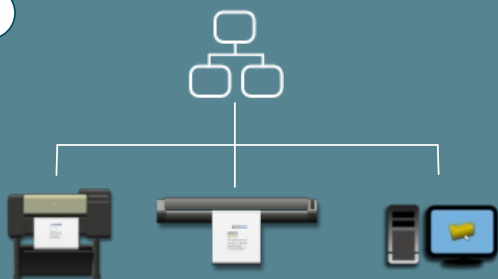
Remove shipping packing from scanner.

L24ei / L36ei Scanner Quick Start Guide

P/N:5600T230_Rev001

Connect Power and Network

1



Connect power and network cables.

2



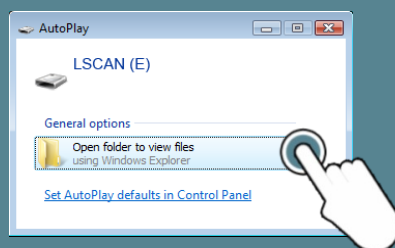
Power on.

3



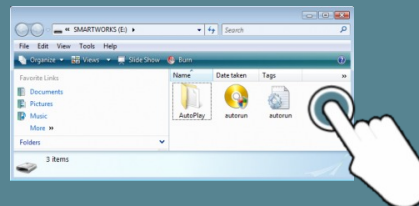
Insert CD into PC.

4



Browse CD.

5



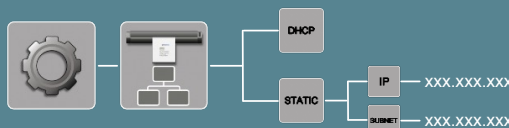
Select Auto-run.

6



Select country to install "ScanApp Lei".
Select maintenance videos.
Select documentation folder.

7



Configure scanner network address.

Quick COPY

1



Insert document into the centre of the scanner, face up.

2



Select COPY function and press the Green button.

3



Select target printer.

4



Collect your copy from the printer.

L24ei / L36ei Scanner Quick Start Guide

P/N:5600T230_Rev001

Quick SCAN to USB

1



Insert USB memory stick (FAT32, 128GB max).
Do not use a USB extension cable.

2



Insert document into the centre of the scanner, face up.

3



Select SCAN to USB function and press the Green button.

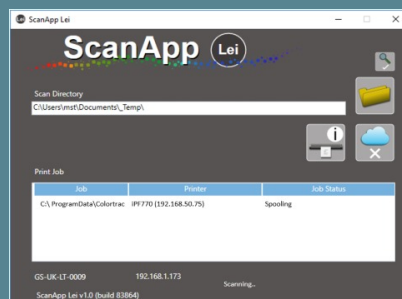
4



Wait before removing USB stick.

Quick SCAN to PC

1



Ensure "ScanApp Lei" is running

2



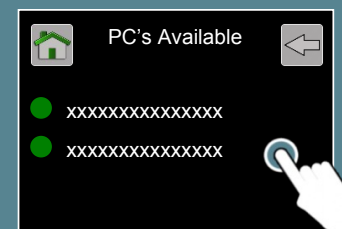
Insert document into the centre of the scanner, face up.

3



Select SCAN to PC function and press the Green button.

4



Select target PC.

5



Wait for transfer to PC.