

WS3 product information sheet

Product Specifications

Fits most: 13" to 26" monitors

Supports up to: 30 lbs (13.6 kg)

Maximum extension: 17.3" (439mm)

Tilt: -5 to +20°

VESA compliant: 75x75, 100x100

Color: Black and Platinum

Product Benefits

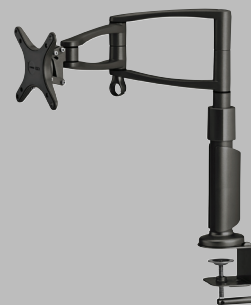
- Pan and tilt for optimum viewing
- Gas-assisted lift for easy height adjustment
- Rotates 360° to accommodate multiple viewers
- Mount on edge of desk or through a cable access port
- Rotate for portrait or landscape orientation
- Integrated cable management for routing wires
- Lift n' Lock™ for easy installation
- Includes complete Grade 5 hardware kit



WorkSpace Series™ desktop monitor mounts are designed with a gas-assisted lift and 360° rotation so the monitor can be repositioned effortlessly.



Series



WS3



WS2



WS1



OmniMount, an innovator of A/V mounts and furniture for more than a quarter century, is the choice of professional installers and the brand most recommended by flat panel manufacturers. The WorkSpace Series™ of sleek and stylish desktop monitor mounts are specifically designed with today's business professionals and students in mind. The WS3 supports up to 26" flat panel monitors and has a double-arm design with a tilt head for maximum viewing angles.



WS3 technical data sheet



OmniMount, an innovator of A/V mounts and furniture for more than a quarter century, is the choice of professional installers and the brand most recommended by flat panel manufacturers. The WorkSpace Series™ of sleek and stylish desktop monitor mounts are specifically designed with today's business professionals and students in mind. The WS3 supports up to 26" flat panel monitors and has a double-arm design with a tilt head for maximum viewing angles.



Product Specifications

Fits most: 13" to 26" flat panels

Supports up to: 30 lbs (13.6 kg)

Maximum extension: 17.3" (439mm)

Tilt: -5 to +20°

VESA compliant: 75x75, 100x100

Color: Black and Platinum

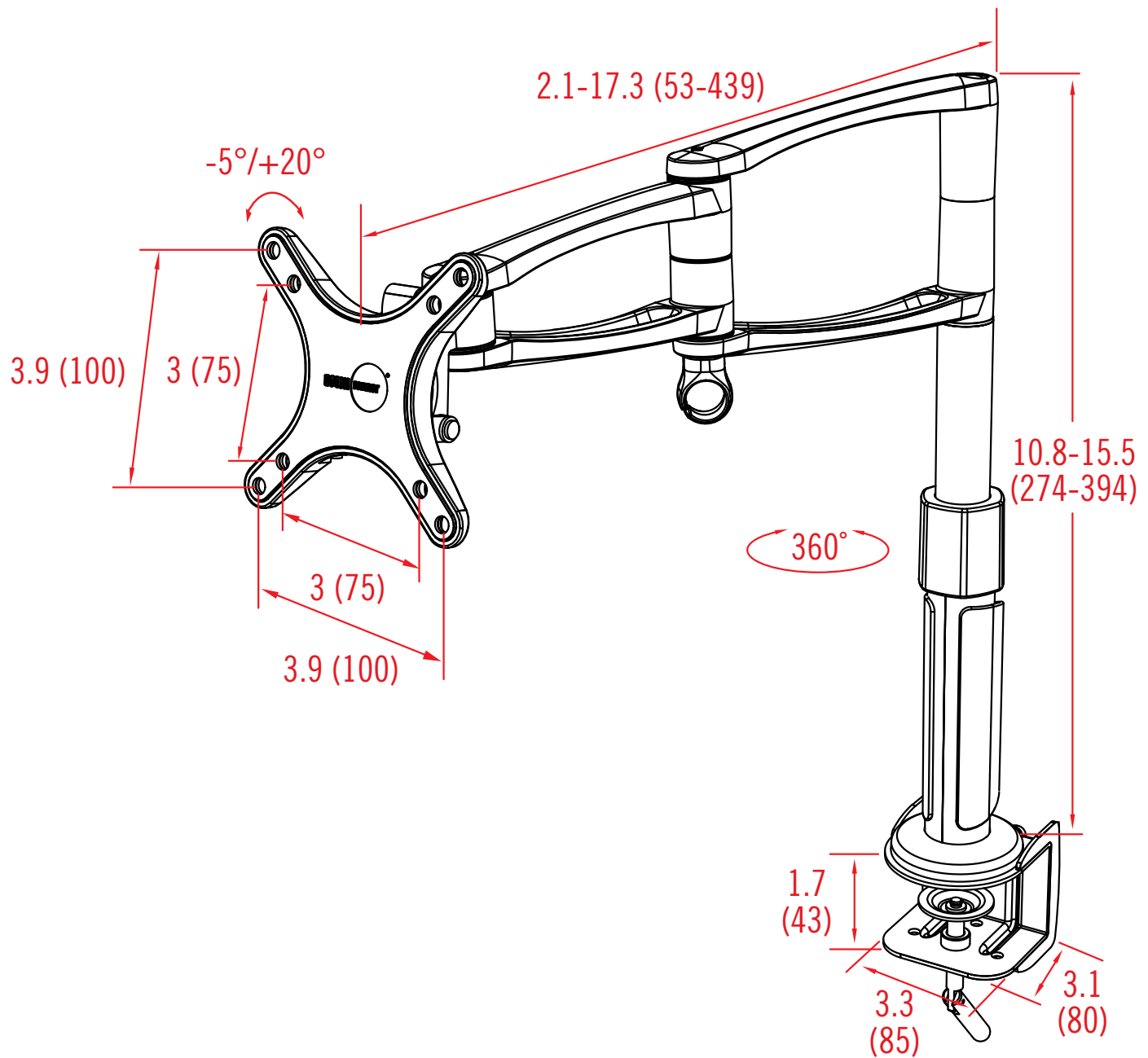
Product Benefits

- Pan and tilt for optimum viewing
- Gas-assisted lift for easy height adjustment
- Rotates 360° to accommodate multiple viewers
- Mount on edge of desk or through a cable access port
- Rotate for portrait or landscape orientation
- Integrated cable management for routing wires
- Lift n' Lock™ for easy installation
- Includes complete Grade 5 hardware kit

	Color	Stock Code	Packaging UPC	MC UPC
Americas	Black	1004020-1	728901021152	728901714603
International	Black	1004020EU-1	728901021152	728901714603
Americas	Platinum	1003470-1	728901018848	728901712234
International	Platinum	1003470EU-1	728901019678	728901713071

	Dimensions WxDxH inches (mm)	Wt lbs (kg)
Product Box	15.9 x 10.2 x 3.9 (405x260x100)	7.7 (3.5)
Master Carton	16.3 x 10.6 x 16.5 (415x270x420)	30.9 (14)

Box Contents	Qty
Mount	1
Clamp	1
Complete mount installation hardware kit	1
Complete monitor attachment hardware kit	1
Instruction manual	1



inches (mm)